

# Lumipix 15IP

15x10W outdoor linear pixel batten

ORDER CODE: **LUMIPIX15IP**



**Lumipix 15IP** is a tour-ready LED pixel batten conceived to be fully versatile and perform outdoor, delivering advanced brightness and colour mixing by offering individual pixel control of each cell. The robust die-cast aluminium structure with omega quick lock socket on the bracket and the waterproof power and signal connector make **Lumipix 15IP** suitable for the most demanding environments.

## MAIN FEATURES

- LED batten with 15 individually controllable RGBW LED
- Waterproof housing and connections for outdoor usage
- Extensive colour palette with precise mixing and powerful output



## TECHNICAL SPECIFICATION

### LIGHT SOURCE

- Source: 15x10W RGBW LEDs
- Luminous flux: (16° + diffused) 4'983 lm - (16°) 5'394 lm @full
- Lux: (16° + diffused) 1'886 lm - (16°) 2'454 lx @5 m full
- Source life expectancy: > 30.000 h

### OPTICS

- Beam angle: 16°
- Field angle: 31°
- Additional optics: magnetic frost holder on board

### COLOUR SYSTEM

- Colour mixing: RGBW / FC
- CCT: CCT control through dedicated DMX channel
- White presets: 2.800 K - 10.000 K
- Colour wheel: virtual colour wheel with macros
- Macros: several pre-build pixel macros with adjustable speed

### DYNAMIC EFFECTS

- Pixel patterns: pre-programmed dynamic and static patterns
- Static mode: selection of static colour
- Manual mode: manual adjustment of colour

### BODY

- Hardware on-board: sockets for quick-Lock Omega bracket (clamp included)
- Body: sturdy die-cast aluminium body
- Body colour: black

### CONTROL

- Protocols: DMX512
- DMX channels: 4 / 6 / 10 / 60 / 65 channel
- Pixel control: pixel2pixel control
- W-DMX: included, wireless solution receiver
- Display: Graphic User Interface
- Firmware upgrade: yes, via USB - DMX interface (UPBOX1) not included
- Master/Slave: for synchronised operation of more units linked in a chain

### ELECTRONICS

- Dimmer: linear 0 ~ 100% electronic dimmer
- Dimmer curves: 4 selectable dimming modes available
- Strobe / shutter: 0 ~ 30 Hz, electronic
- Display battery: self-charging battery backup
- Operating temperature: -10° ~ +45°

### ELECTRICAL

- Mains power supply: 100-240V - 50/60Hz
- Max power consumption: 161W
- Max power consumption (at 120V): 162W
- Output (at 230V): 23 units on a single power line
- Output (at 120V): 12 units on a single power line

### PHYSICAL

- IP rating: 65 for temporary outdoor application, not for fixed installation
- Cooling: passive cooling and fan-free
- Suspension and fixing: double hanging bracket suitable for safe hanging and for floor positioning
- Signal connection: Seetronic XLR 5p IN/OUT connectors
- Data connection: W-DMX receiver
- Power connection: Seetronic powerCON waterproof IN/OUT connectors
- Dimensions (WxHxD): 992x206x160 mm
- Weight: 8,6 kg

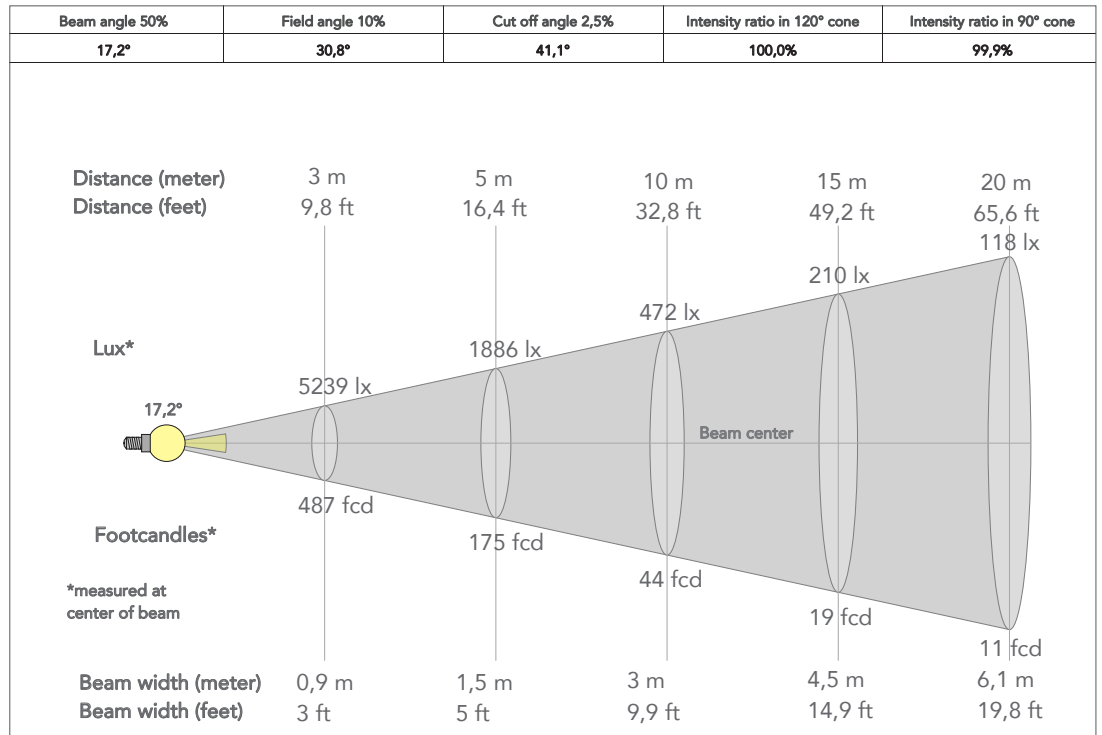
## ACCESSORIES & RELATED PRODUCTS

- OS25 Quick-Lock omega bracket (included)
- UPBOX1U Firmware uploader kit, USB IN, 3pin XLR DMX OUT, USB OUT
- LP15IPFILTER30 30° simmetric light diffuser filter for LUMIPIX15IP

- LP15IPFILTER6010 60x10° asimmetric light diffuser filter for LUMIPIX15IP
- LP15IPFILTER7545 75x45° asimmetric light diffuser filter for LUMIPIX15IP
- WDBBOX WDMX battery transmitter, mini 5p DMX and WIFI IN, 2.4 GHz, 0.4 kg

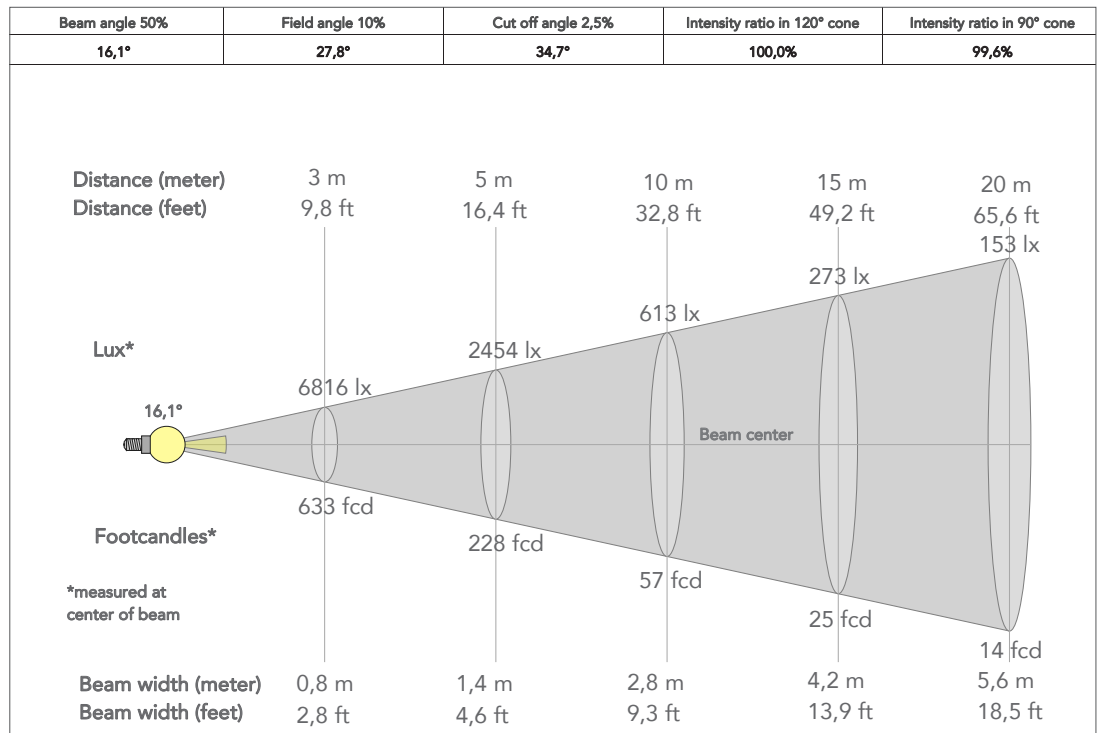
### PRESET FULL ON

Beam angle 50%: 16° diffused

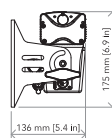
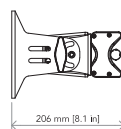
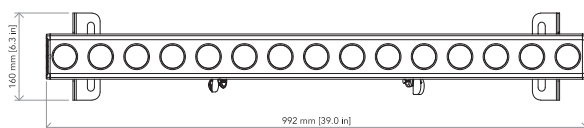


### PRESET FULL ON

Beam angle 50%: 16°



### TECHICAL DRAWINGS



For more product info and downloads visit our website

